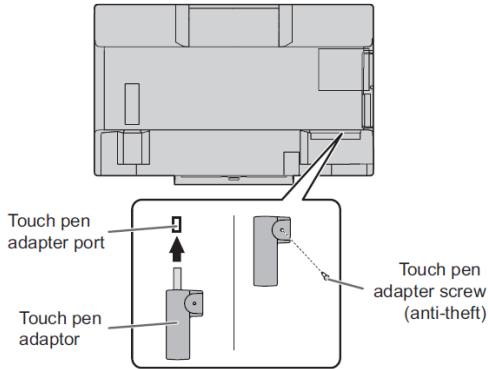


# Easy Setup Guide for PN-70TA3/PN-60TA3

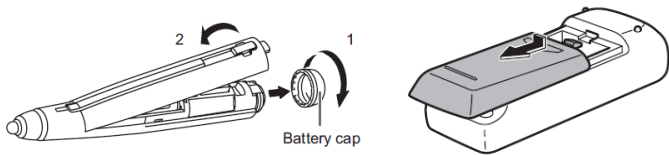
## 1. Connect the touch pen adapter

Insert the touch pen adapter into the touch pen adapter port on the backside of the monitor.



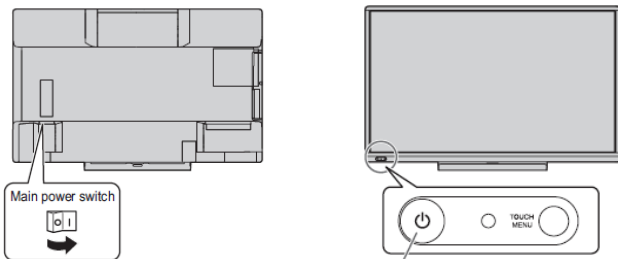
## 2. Prepare the touch pen and the Remote control Unit

Set a AAA battery in the touch pen and the AA battery in the Remote Control Unit.



## 3. Turn on the power

- (1) Turn on the main power switch.
- (2) Push the power button.



Power button/Power LED

LED Status	Status of the monitor
Green	Power on
Orange	Power off(Standby mode)
Orange flashing	Power off (Whiteboard standby mode)
Green flashing	Input signal waiting mode

## 4. Set the operation mode

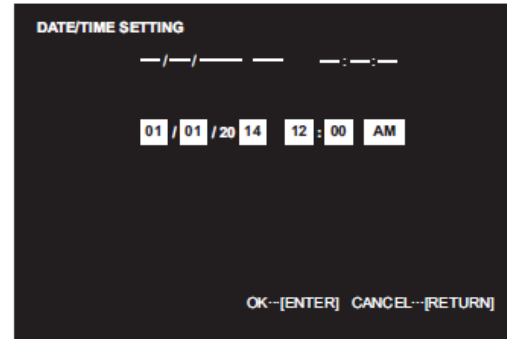
Set the operation mode by the remote control unit.

**MODE1**...OFF IF NO OPERATION is set to ON, and STANDBY MODE is set to LOW POWER. (These settings can not be changed.)  
Determines whether or not to set the monitor to go into standby mode when there is no operation from the remote control unit, or LAN for over 4 hours. Power consumption in standby mode is also minimized.

**MODE2**...Will perform standard operation. OFF IF NO OPERATION is set to OFF, and STANDBY MODE is set to STANDARD. These settings can be changed.

## 5. Set the date/time of the monitor

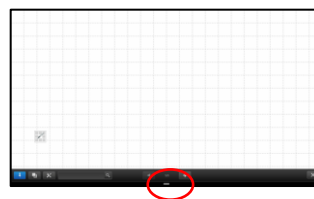
Set the date and time by the remote control unit.



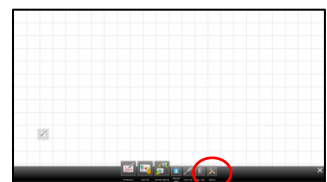
1. Press or to select the date and time, and press or to change the numerical values.
2. Press .

## 6. Enable the system mode

- (1) Touch a toolbar in the launcher.

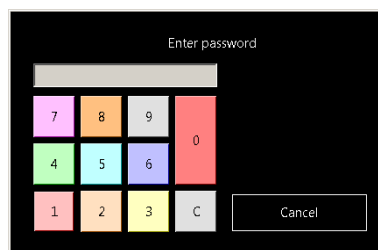


- (2) Touch "Settings" in the launcher menu.

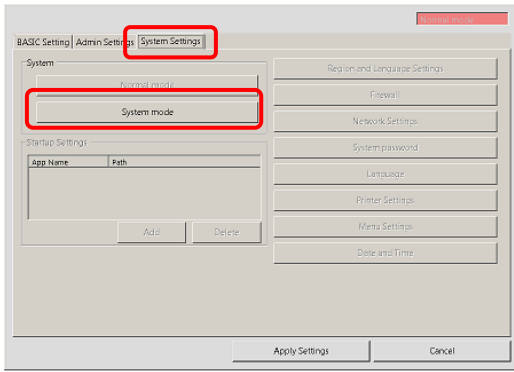


- (3) Enter password.

Enter the password set in admin password. If a password is not set, enter "00000"

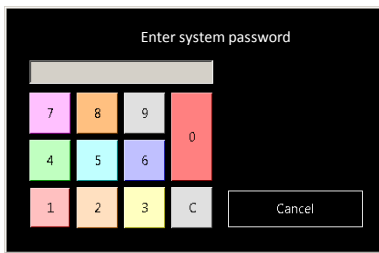


(4) Touch "System mode" on "System Settings" tab.

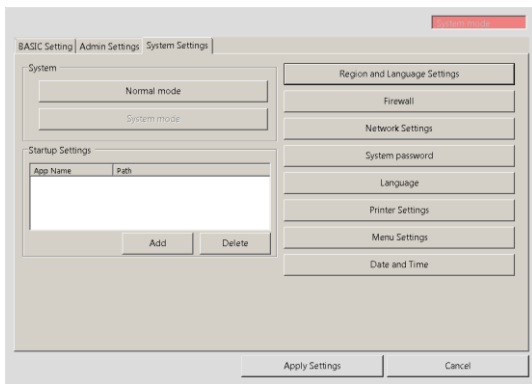


(5) Enter system password.

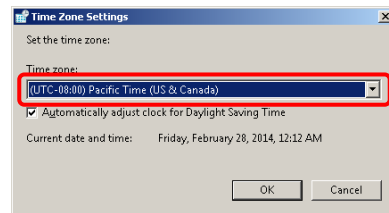
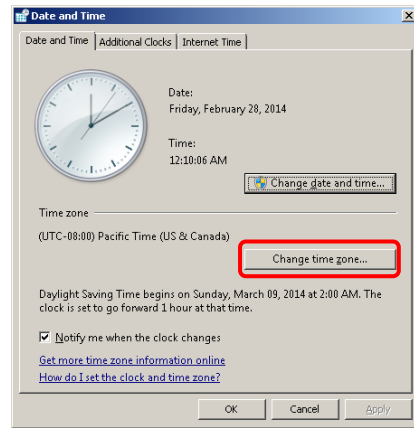
Enter the password set in system password.  
If a password is not set, enter "00000"



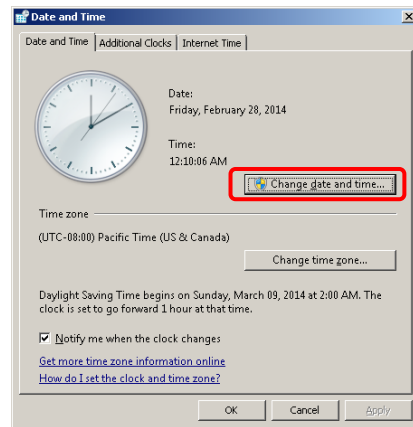
The monitor is automatically restarted in System mode.



(2) Touch "Change time zone..." on "Date and Time" tab.



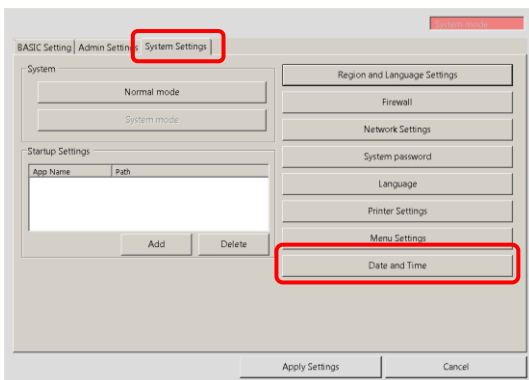
(3) Touch "Change date and time..." on "Date and Time" tab.



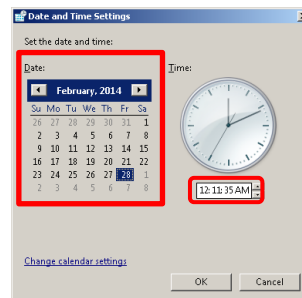
## 7. Date and Time setting

(1) Touch "Date and Time" on "System Settings" tab.

Set date, time, and time zone.

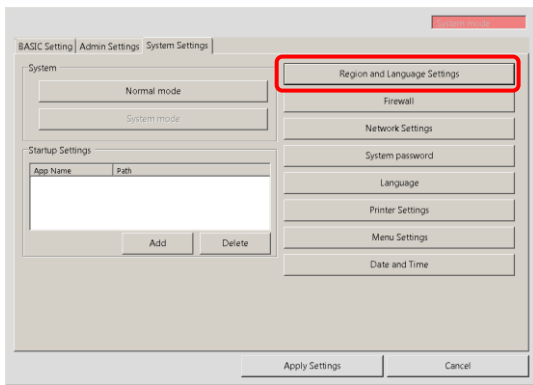


Set the date and time.

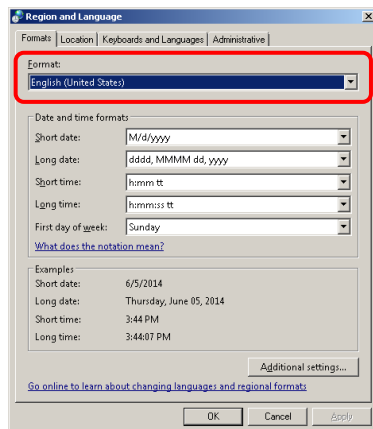


## 8. "Region and Language" settings for the Operation System

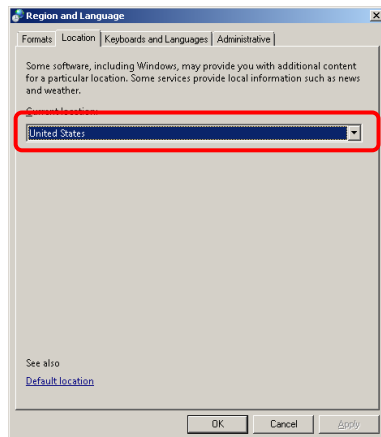
- (1) Touch "Region and Language Settings" on "System Settings" tab.



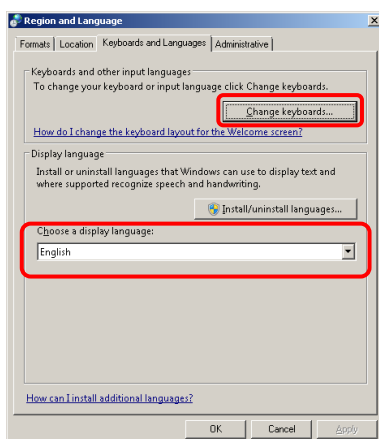
- (2) Select the format.



- (3) Select the location.



- (4) Select the keyboards and languages.

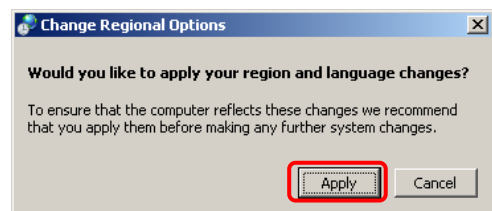


[Note]  
Do not click "Apply" button. If click "Apply button", message of "Logout" appears and click "Cancel" button.

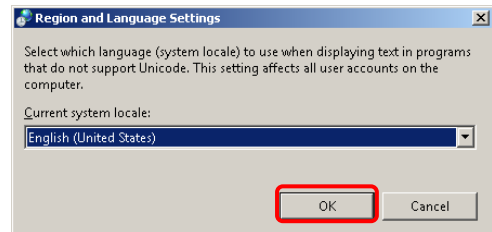
- (5) Select the system locale according to your language.



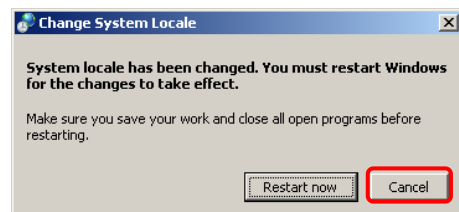
When the following message is displayed, click "Apply" button to continue.



When the following dialog is displayed, select your own language.

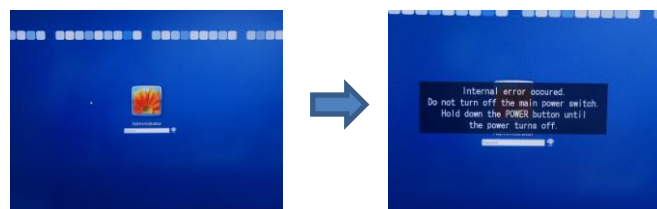


After touching "OK" button, the following message is displayed and touch "Cancel" button.



[Note]

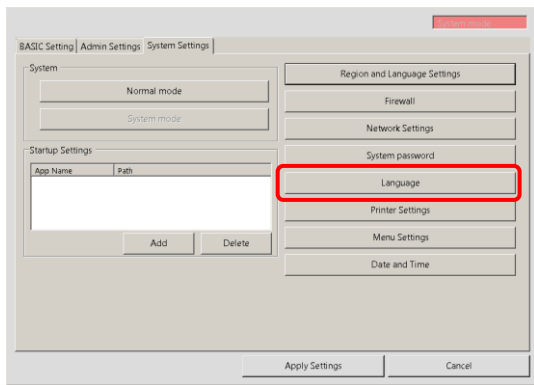
During the above steps, the following screen may be displayed. In that case, keep pressing the power button.



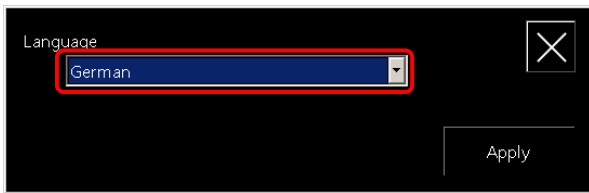
Keep pressing the power button again in order to turn off PN-L603A or PN-L703A. After shutting down the system, turn on the system again.

## 9. "Language" settings of SHARP Software

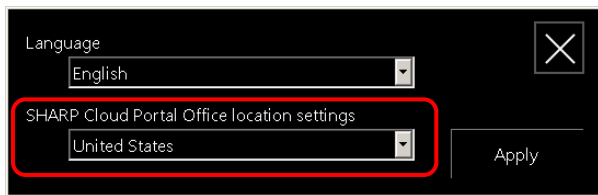
(1) Touch "Language" button.



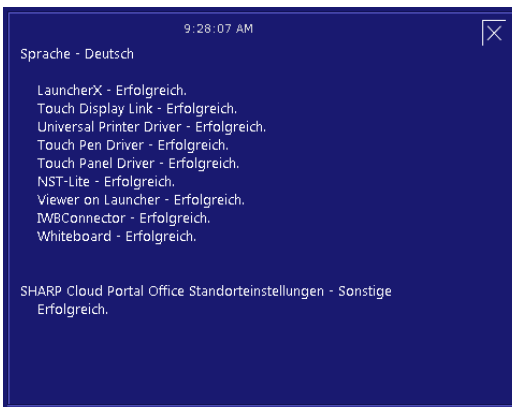
(2) Select your language.



If you select "English", please select "SHARP Cloud Portal Office" location settings.



(3) Touch "Apply" button.

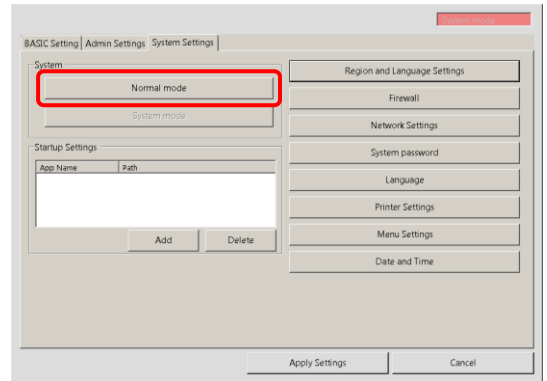


[Note]

If you need "Printer Setting" or "Scanner Setting", skip the step 10 and go to the step 11, step12, or step13.

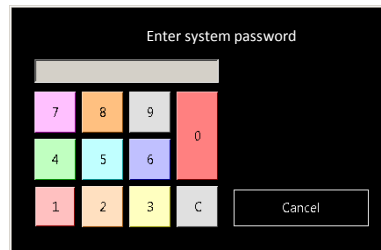
## 10. Return to "Normal mode"

(1) Touch "Normal mode" button.



(2) Enter system password.

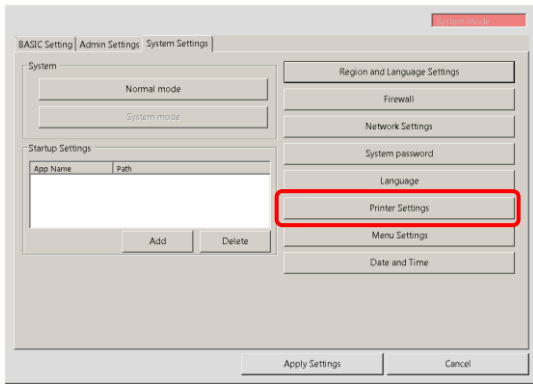
Enter the password set in system password. If a password is not set, enter "00000"



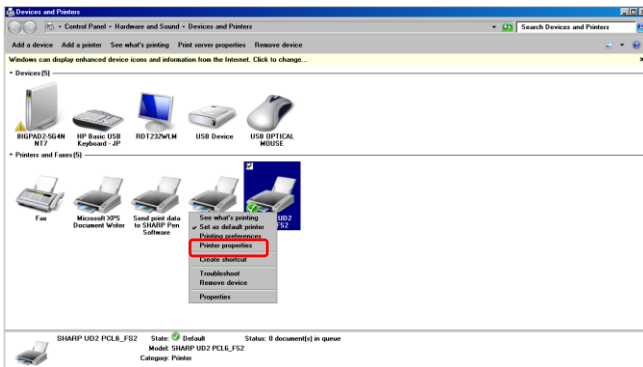
Whiteboard will be started.

# 11. (by using discovery function)

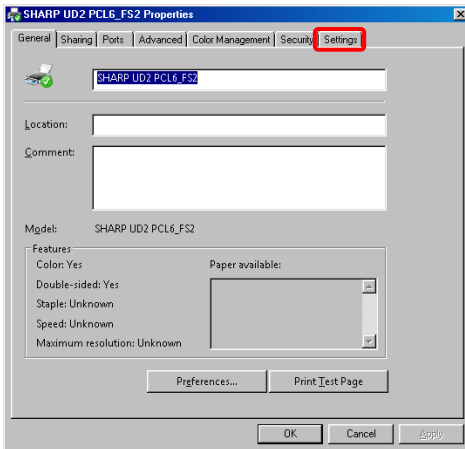
(1) Touch "Printer Settings" button.



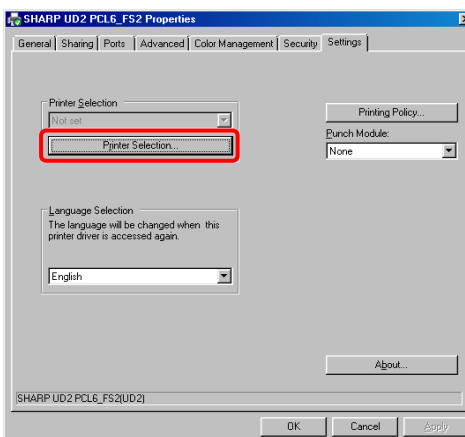
(2) Select a Universal Printer "SHARP UD2\_PCL6\_FS2", and show Printer properties by opening the right-click menu.



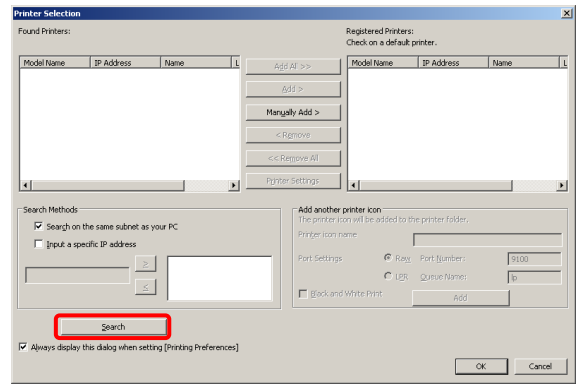
(3) Touch "Settings" tab.



(4) Touch "Printer Selection" button.

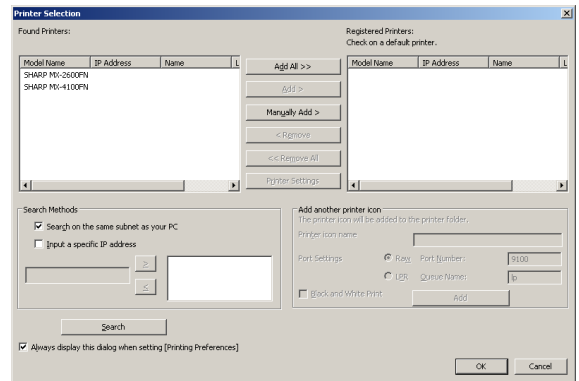


(5) When selecting Printer by using discovery function, touch "Search" button.

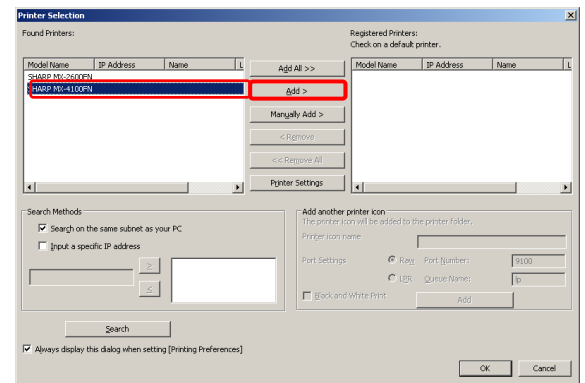


A search dialog is displayed.

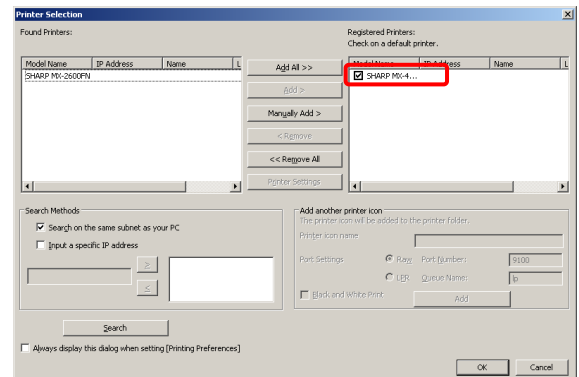
Available printers are shown on the search result list.



(6) Select one from the result list. (ex.) [SHARP MX-4100F...] Touch "Add >" button.



The printer is added on the right-side list. And select a check box of added printer as a default one.



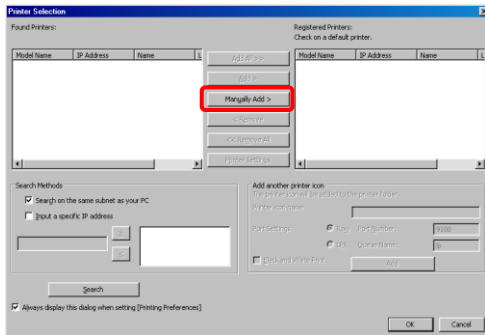
(7) Touch "OK" button.

If you close the setting, go to the step 10.

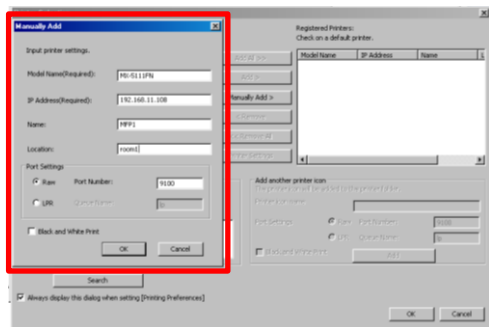
# 12. (Select printer manually)

Before the installation of the printer, please confirm that the white board connected to the same network.

(1) Touch "Manually Add >" button.

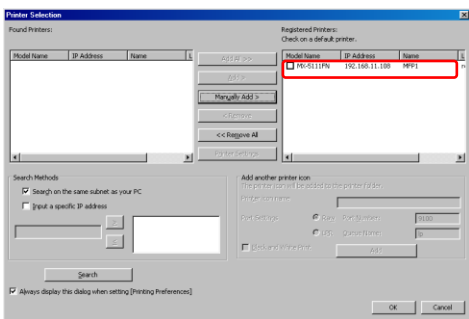


(2) Input printer settings properly and touch "OK" Button.

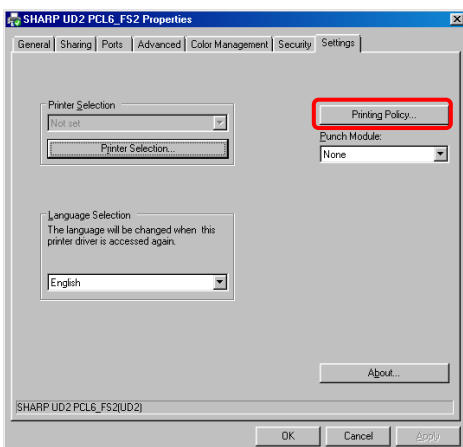


ex) Model Name (Required) : 「MX-5111FN」  
 IP Address (Required) : 「192.168.11.108」  
 Name : 「MFP1」  
 Location : 「room1」  
 Port Settings : — Default—  
 Black and White Print : — Default—

(3) Confirm that selected printer is added on the right-side list box, then press "OK" button.  
 (ex.) [SHARP MX-5111FN...]

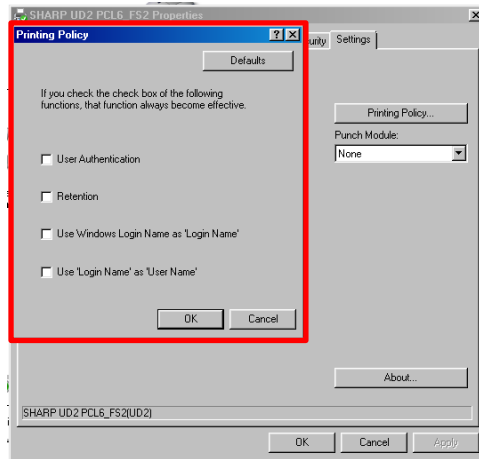


(5) Touch "Printing Policy" button.

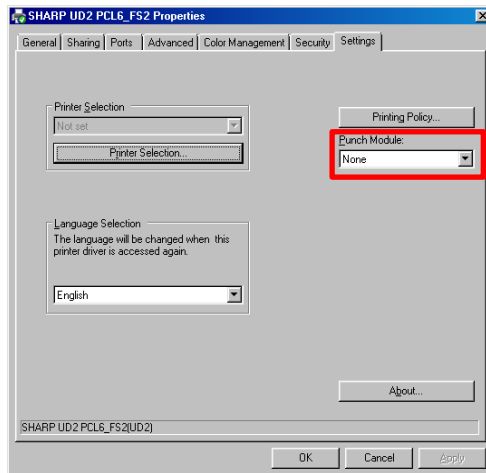


(6) Select necessary item on check box, and touch "OK" button.

(\* )The initial values are all check OFF. Please tap "Defaults" button to reset to their initial values.

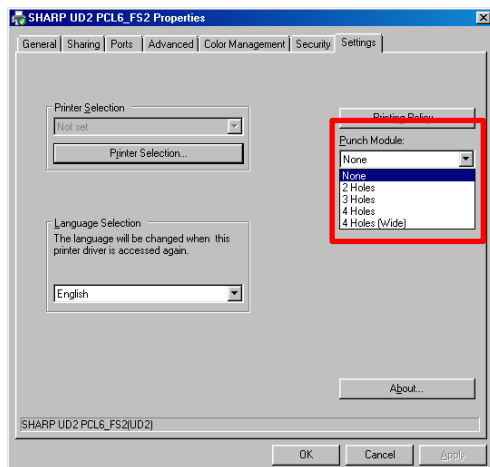


(7) Regarding Punch Module, touch "Punch Module" list box.



(8) Select any module as needed.

(\* ) The initial value is "None".



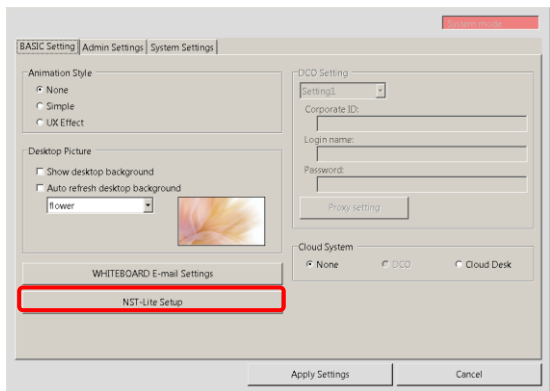
(9) Touch "OK" button.

If you close the setting, go to the step 10.

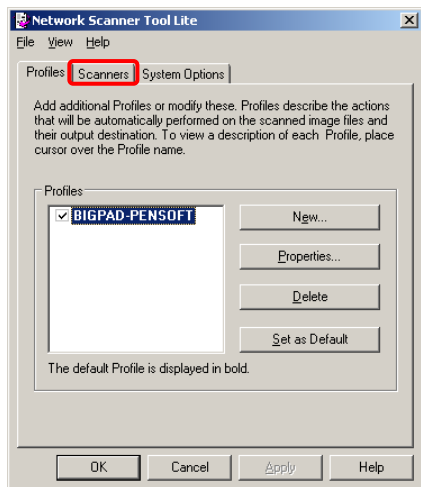
# 13. Scanner settings (Network Scanner Tool Lite)

Before the installation of the scanner, please confirm that the white board connected to the same network.

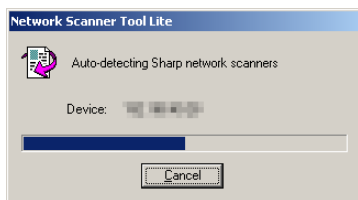
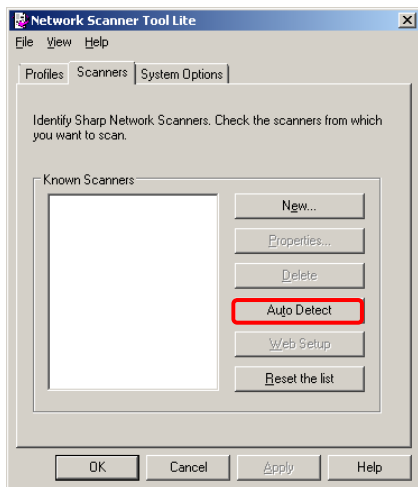
(1) Touch "NST-Lite Setup" on "BASIC Setting" tab.



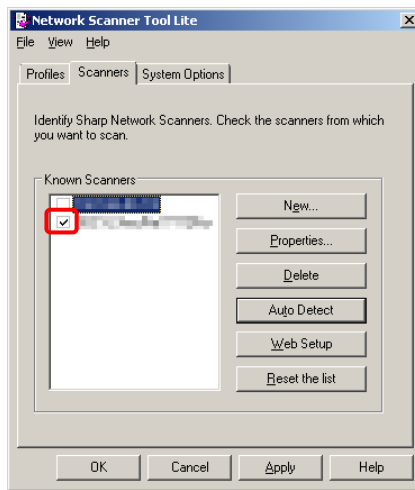
(2) Touch "Scanners" tab.



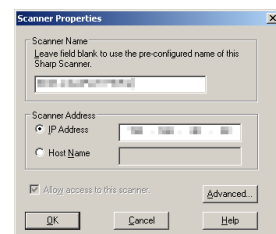
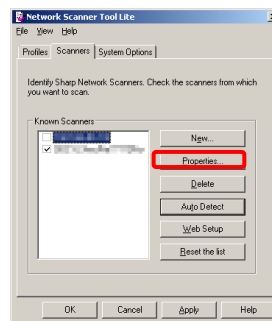
(3) Touch "Auto Detect" to automatically find scanners.



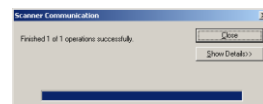
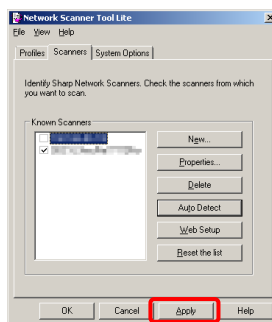
(4) Check scanners from which you want to scan.



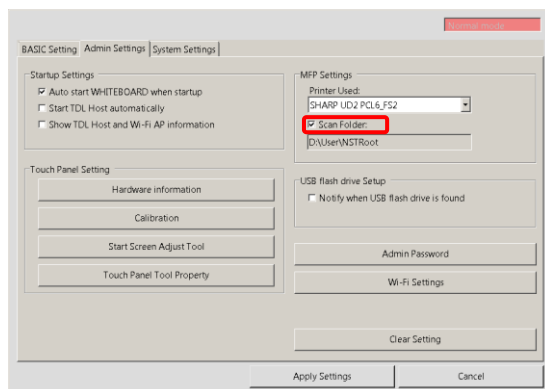
You can confirm scanners' IP address from "Properties" to identify them.



(5) Touch "Apply" to save profile to the scanner. Then touch "OK" to close.



(6) Finally, check "Scan Folder" on "Admin Settings" tab.



If you close the setting, go to the step 10.